

WRITER Elizabeth Sweet
PHOTOS Joyelle West
FIELD EDITOR Karin Lidbeck-Brent



LEFT: The caneback dining chairs, painted Benjamin Moore Rich Coral, add a jolt of energy to the otherwise neutral space. "The kitchen is both fresh and warm at the same time," designer Jenn Sanborn says.

Cape Cod CHARMIER

*A historic Colonial home
is lovingly reimagined for the future.*



THIS PHOTO: "I think there is an inherent beauty in a natural product, so that's always my go-to," Sanborn says of her decision to use stone instead of a manufactured countertop material.

THIS PHOTO: Walls are painted Benjamin Moore White Dove. The trim, ceiling, and perimeter cabinets are swathed in Brick House Tan. The putty shade appears on the island cabinetry's interior, too.



AFTER A RIGOROUS SEARCH, DESIGNER JENN SANBORN'S CLIENTS HAD FALLEN IN LOVE

with a Cape Cod (identical to one of architect Royal Barry Wills' designs) in the leafy coastal town of Newburyport, Massachusetts. Pedigree aside, the dark interiors of the circa-1961 home were ripe for an overhaul. The couple wished for a retirement-friendly environment suitable for aging in place and a spacious chef's kitchen.

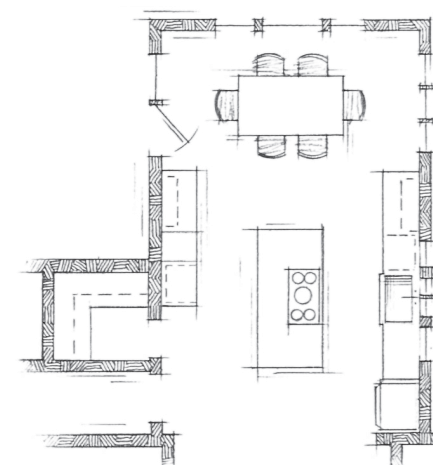
Sanborn set to work, reconfiguring the layout and borrowing space from an existing living area to make room for a main-floor primary bedroom suite, a mudroom, and a breezeway leading to a light-filled kitchen and pantry. "We created this lovely kitchen space with a vaulted ceiling and views to the backyard," she says.

The kitchen features a double-galley layout with an adjacent dining area, a sizable multipane window, and a wood-paneled cathedral ceiling. A hardworking island with a dark finish and elegant cabinets painted Benjamin Moore Brick House Tan provide purposeful storage. Tucked away behind a space-saving pocket door is the ample new pantry. "To have that open, free-of-upper-cabinetry look, you have to put the stuff somewhere," Sanborn says.

She artfully wove in charming period details—an antique-style reproduction sink, a wall-mount faucet, turn-latch hardware, and traditional millwork—to keep new additions age-appropriate. In the center of the space, luxurious Taj Mahal quartzite countertops with a leathered finish add an air of updated luxury.

In its next phase, the historic Cape Cod and its brand-new kitchen will see morning coffee, family meals, and all the gatherings in between. "What brings me joy is that my clients can grow older in a home they just adore," Sanborn says. "That makes it all worthwhile."

Resources begin on page 92.



the plan

A storage-filled island with an induction cooktop anchors two hardworking walls: one with cooking appliances and one with the sink and prep area. At the back of double-galley layout, the dining room is a focal point. Walls of windows and open shelves provide a light and airy look. A nearby pantry keeps the main area clutter-free.



ABOVE: Open shelving, visible upon entry, allows for attractive jar storage. A carpenter built the shelves on-site to Sanborn's specifications. BELOW: On the island's far side, Sanborn prioritized storage over seating to make space for her clients' elegant china and crystal. Cabinets have seeded-glass fronts and contrasting painted interiors.



“It’s not a white kitchen. It has that rich, historical tan color, which is great because everyone has a white kitchen.”

—JENN SANBORN, DESIGNER



THIS PHOTO: A pro-style induction cooktop, steam oven, and wall oven elevate the space's cooking prowess. Shaker-style cabinet fronts conceal the refrigerator.



DESIGNER INSIGHTS: PERFECT PANTRY

A character-rich kitchen deserves a pantry to match. Designer Jenn Sanborn shares her strategies for creating a space that will stand the test of time.

- **Repeat materials.** Sanborn used a familiar paint color and decorative paneling details to keep the pantry in conversation with the kitchen.

- **Add custom window treatments.** The tab-top curtains are handmade and historically appropriate. They conceal practical pullout storage from view, too, and are easy to push aside.

- **Incorporate stone remnants.** Leathered Tuscan Mist granite tops the pantry counter, adding permanence and charm. Plus, it's a remnant, which saved on cost.

- **Install a pocket door.** "Pocket doors are great if you don't want a door swing," Sanborn says, or if you just wish to add some character. For smaller spaces, they're both functional and easy on the eyes.

- **Check the details.** The café curtain rods, purchased on Etsy, needed to be exact, Sanborn says, as did the dimensions for the shelves set to hold appliances. To ensure everything fits as it should, carefully measure height and depth.